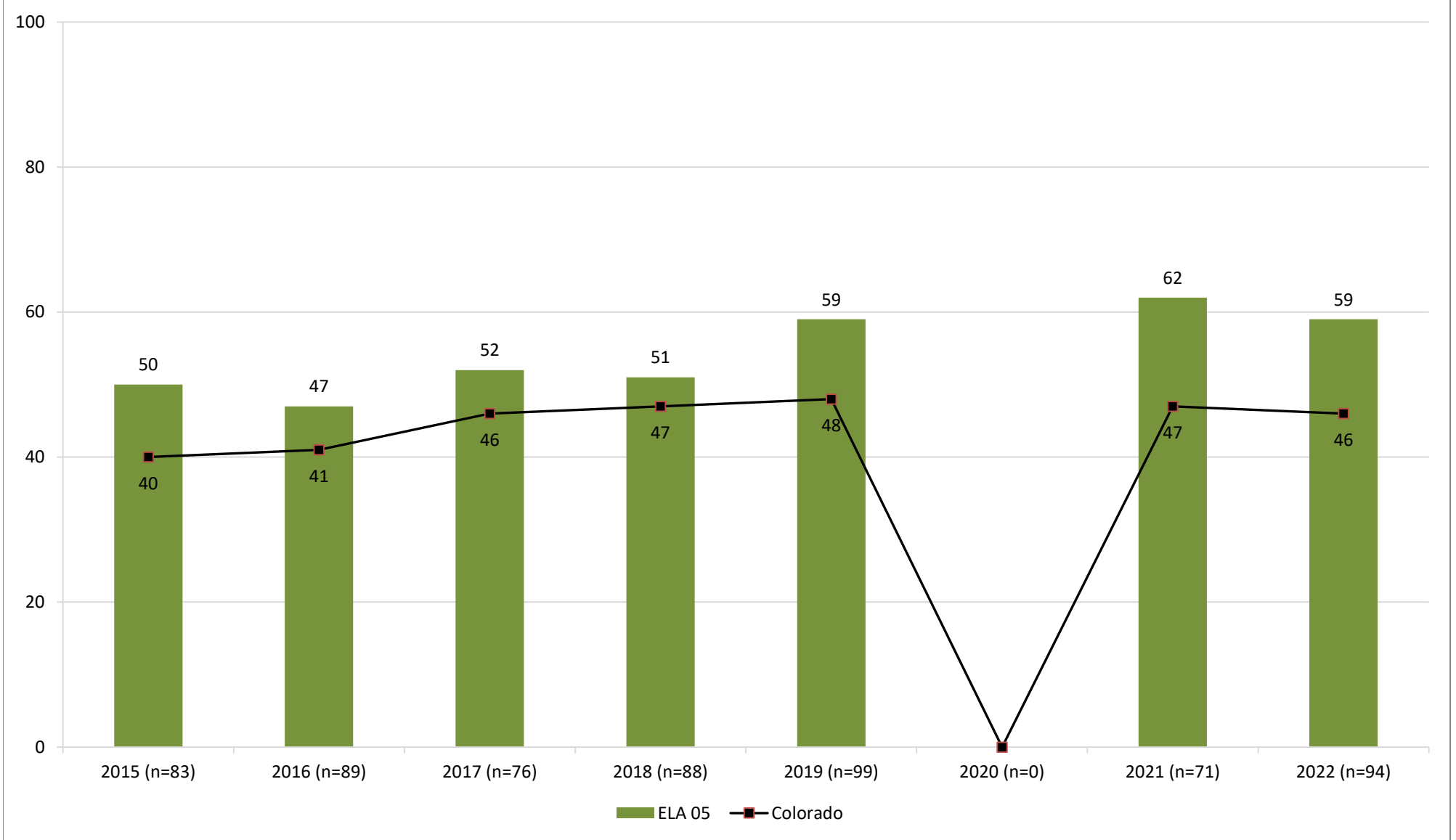


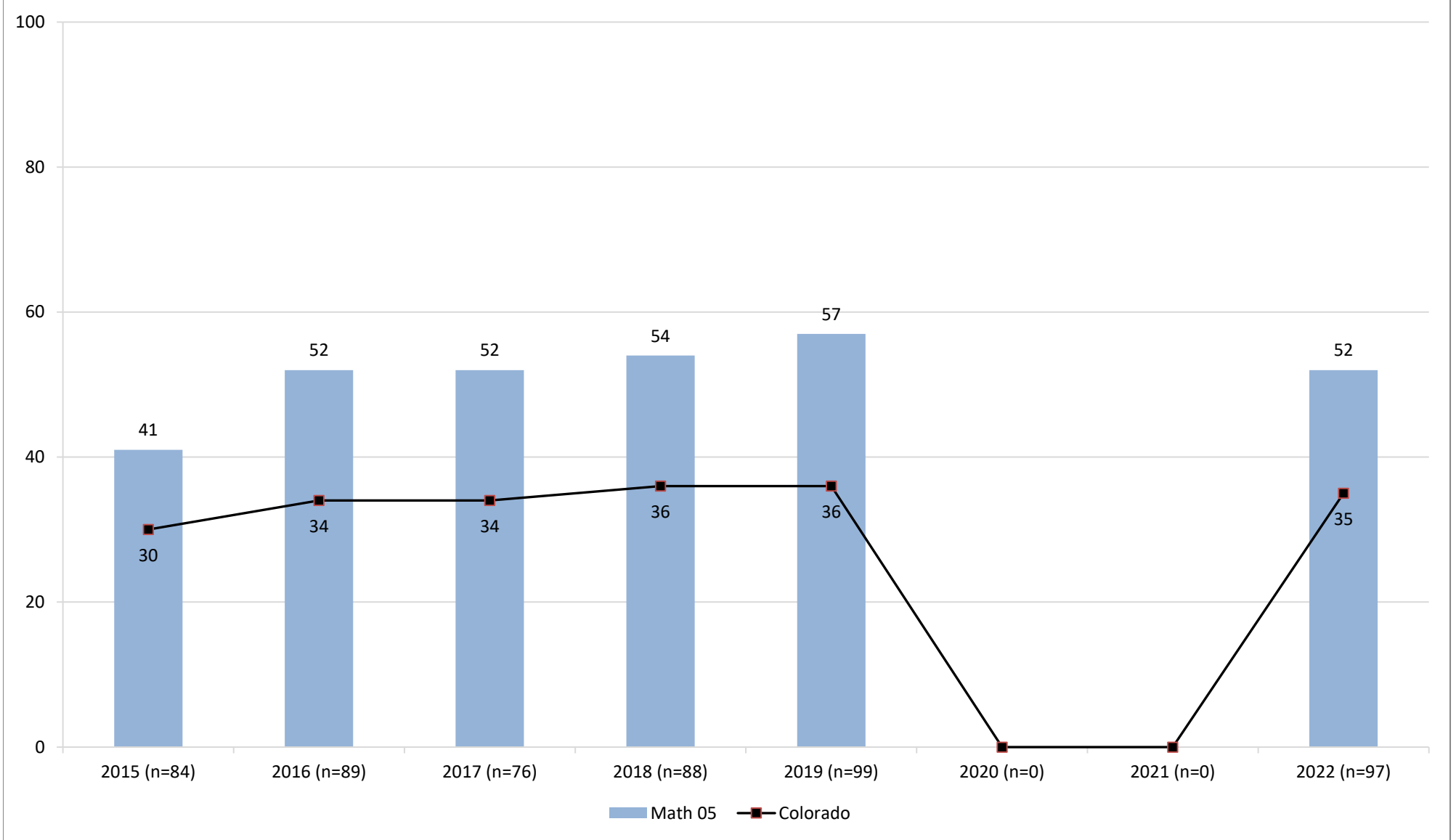
CMAS Performance by Year

CMAS ELA / Literacy % of Students that Met or Exceeded Expectations ELA Grade 5



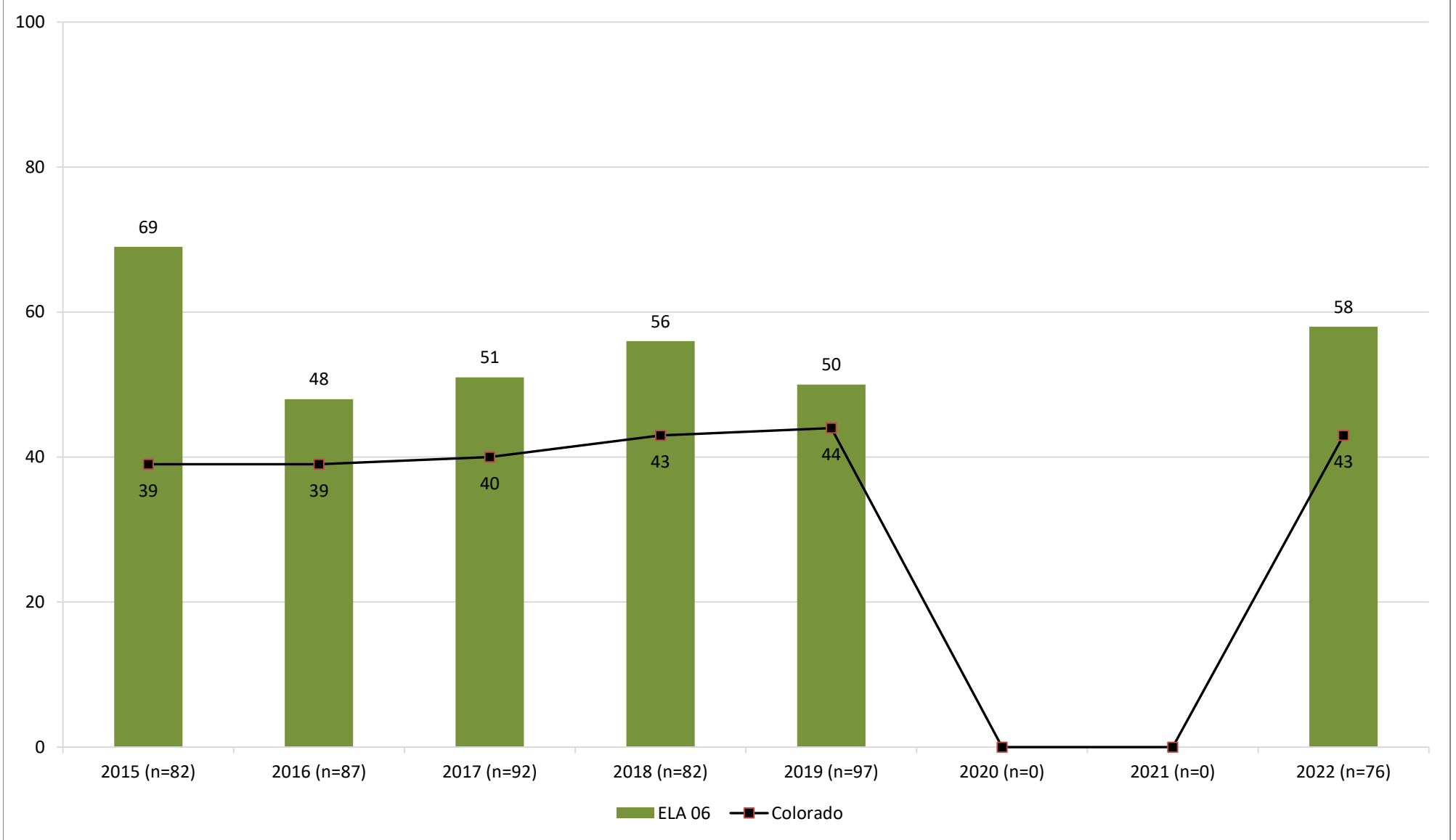
CMAS Performance by Year

CMAS Mathematics % of Students that Met or Exceeded Expectations Math Grade 5



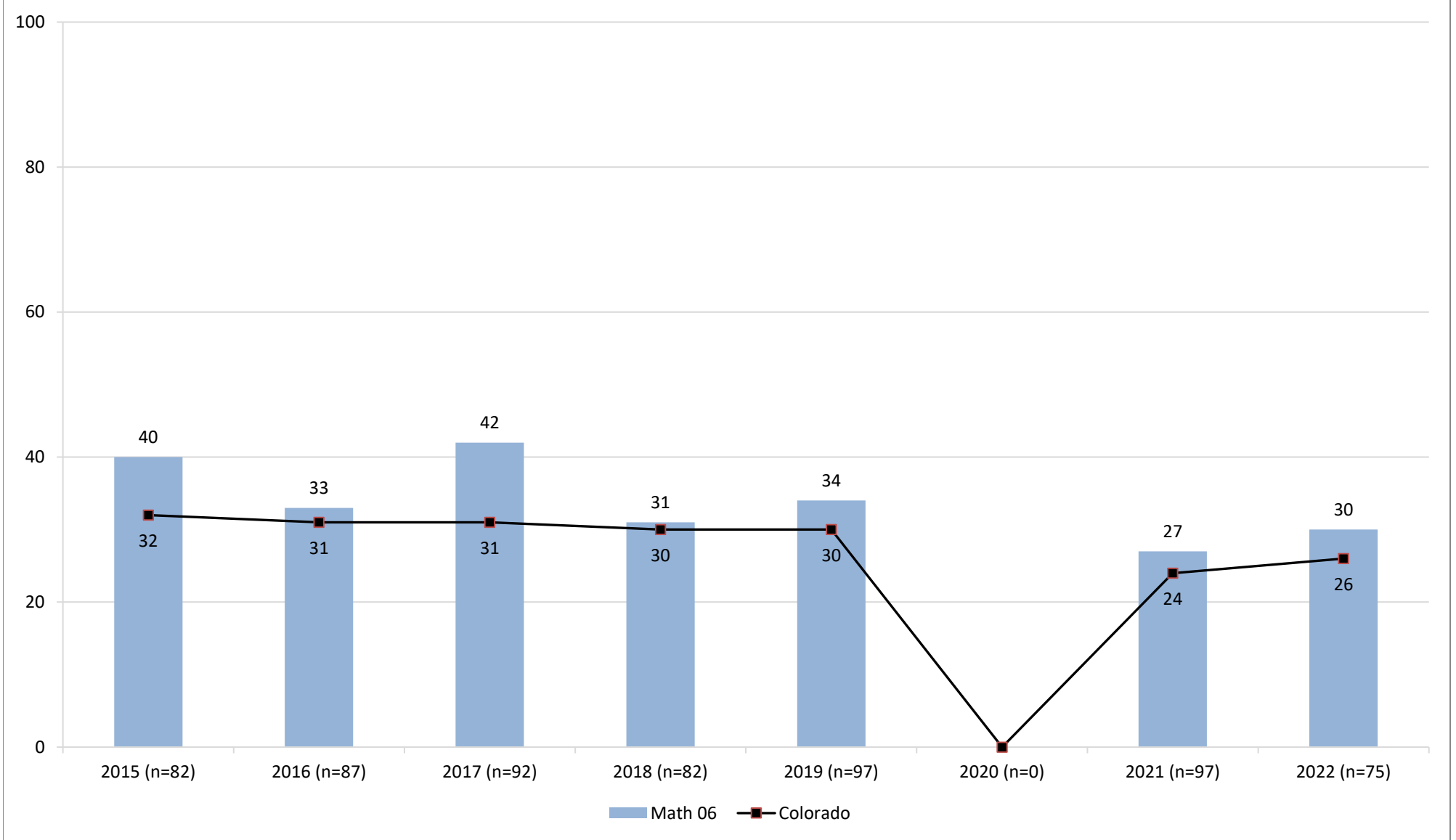
CMAS Performance by Year

CMAS ELA / Literacy % of Students that Met or Exceeded Expectations ELA Grade 6



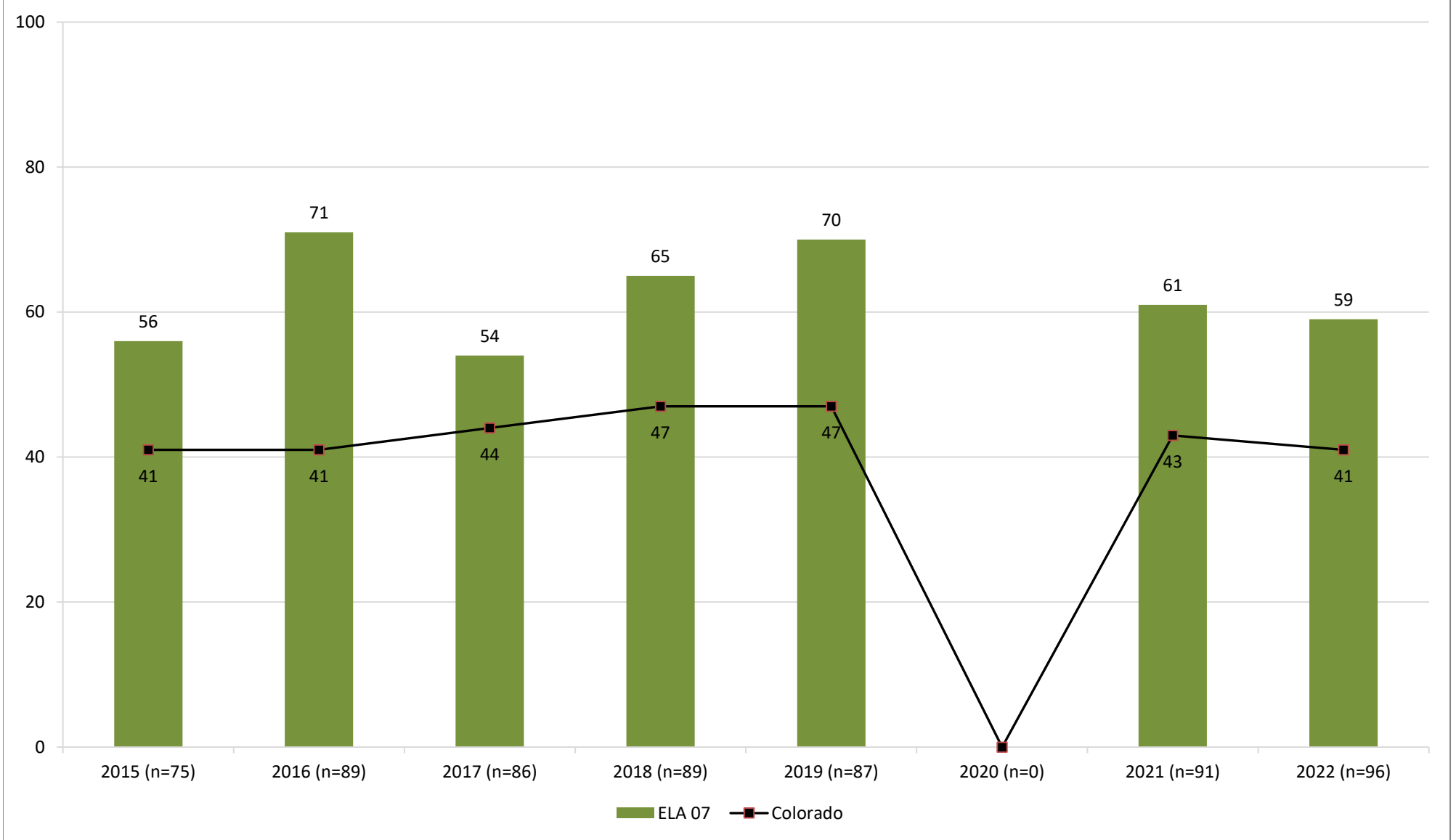
CMAS Performance by Year

CMAS Mathematics % of Students that Met or Exceeded Expectations Math Grade 6



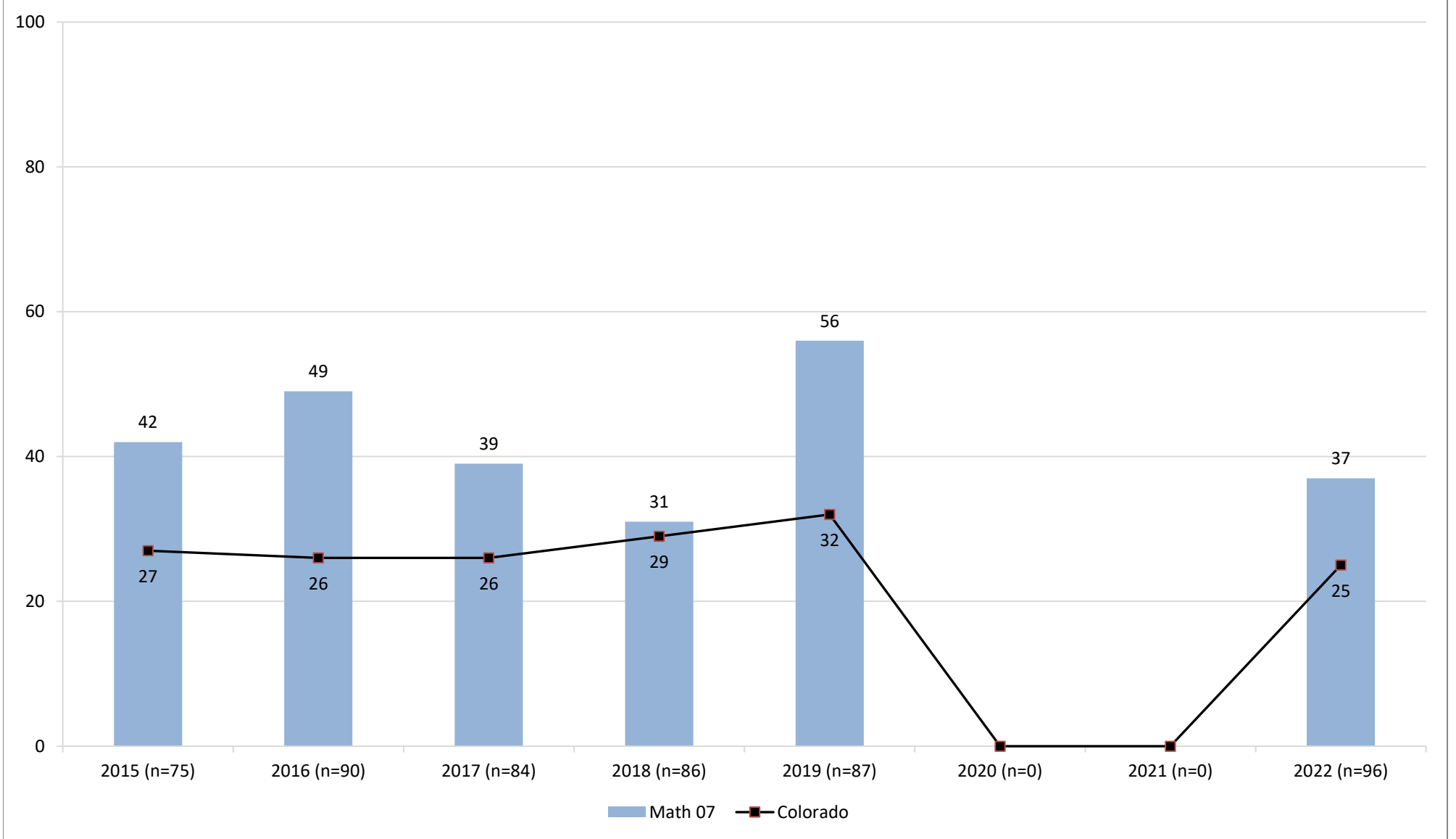
CMAS Performance by Year

CMAS ELA / Literacy % of Students that Met or Exceeded Expectations ELA Grade 7



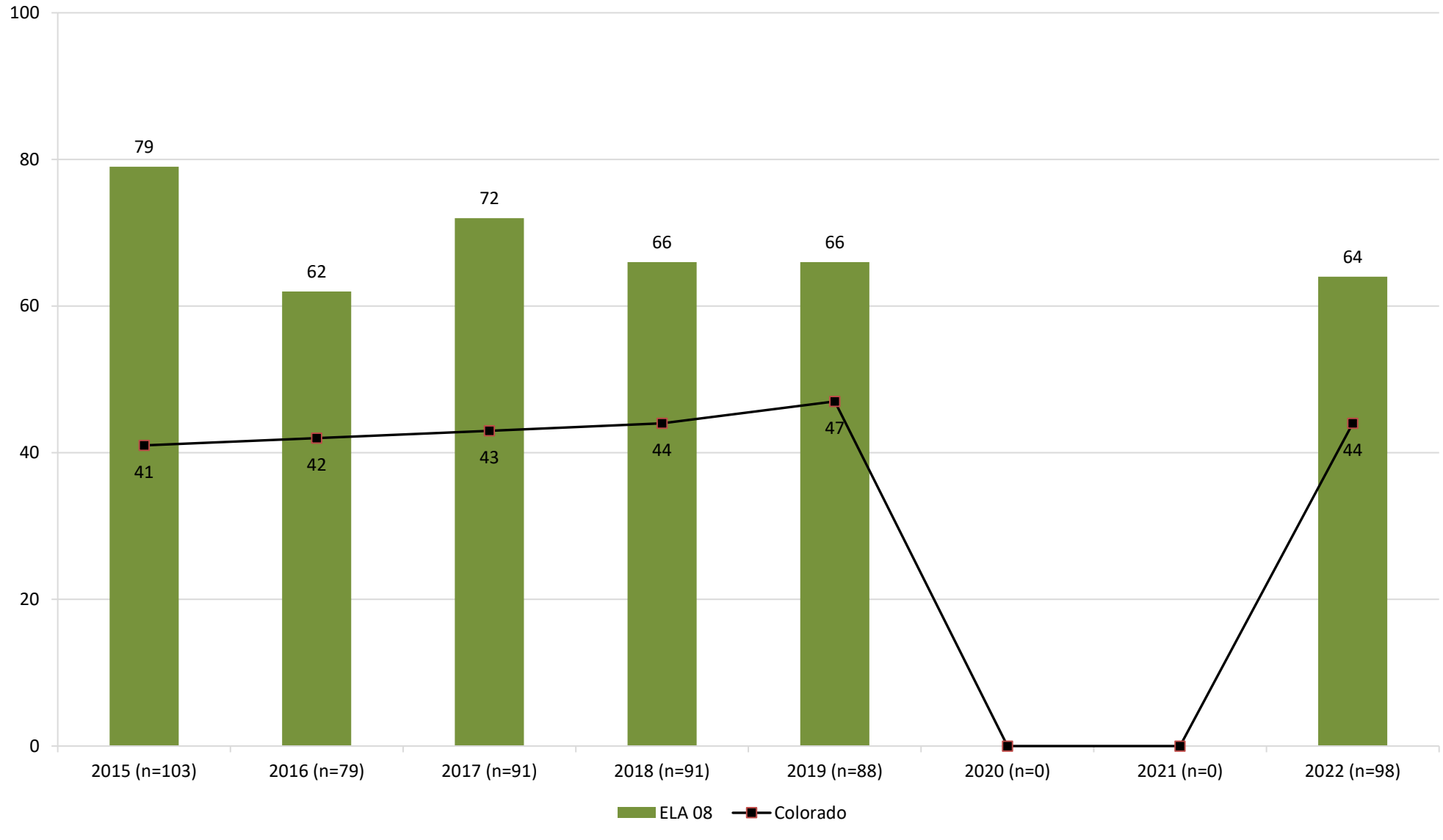
CMAS Performance by Year

CMAS Mathematics % of Students that Met or Exceeded Expectations Math Grade 7



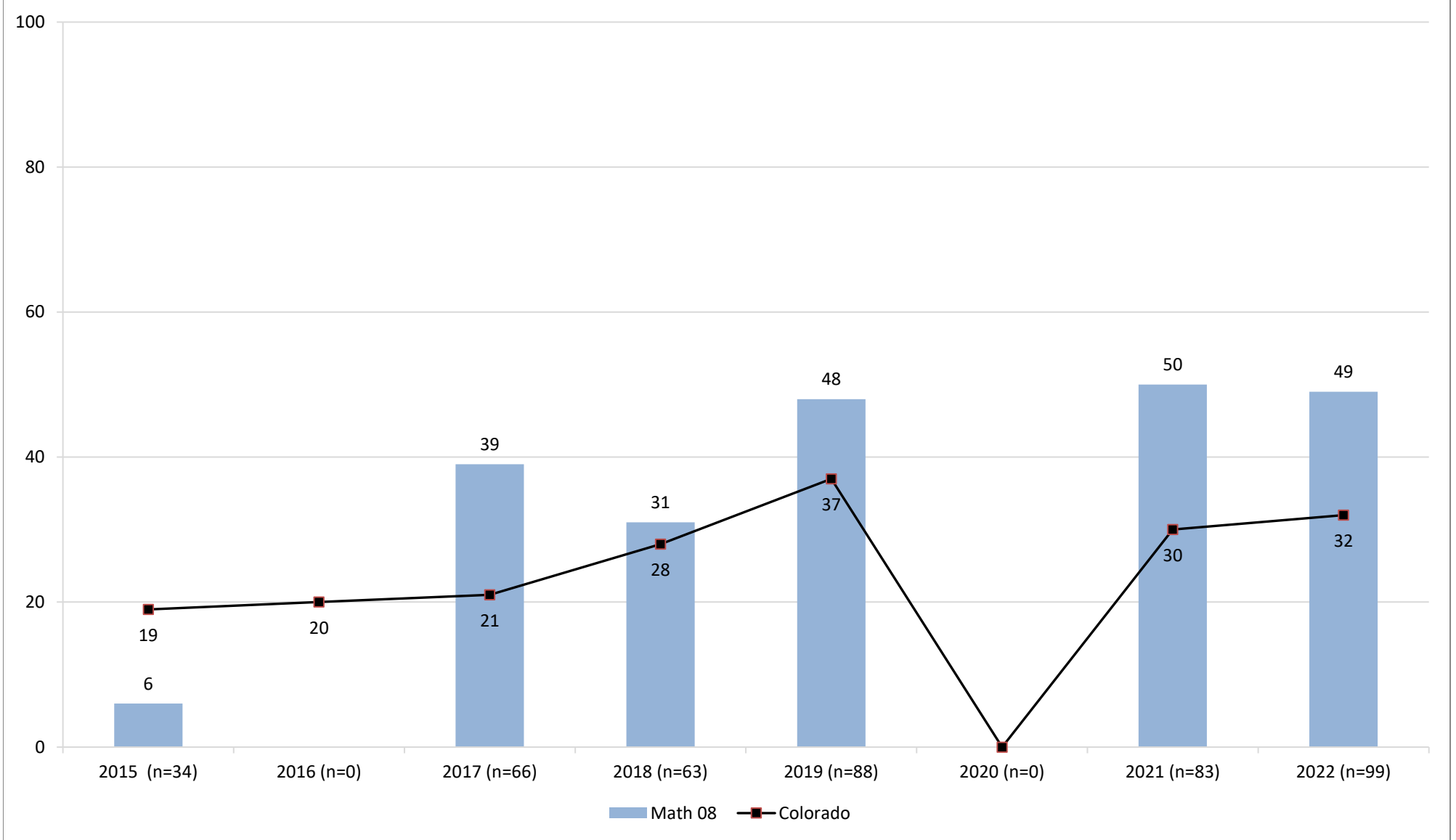
CMAS Performance by Year

CMAS ELA / Literacy % of Students that Met or Exceeded Expectations ELA Grade 8



CMAS Performance by Year

CMAS Mathematics % of Students that Met or Exceeded Expectations Math Grade 8





District Summary of Schools

Colorado Measures of Academic Success

Spring 2022

District: SALIDA R-32-J (0500)

English Language Arts/Literacy - Form A

CONFIDENTIAL - DO NOT DISTRIBUTE

Grade 5

Purpose: This report shows the overall English Language Arts and Reading mean scale scores and participation rate for each school in the district. This page includes the average percent of points earned for each Reading and Writing subclaim and the following page includes the average percent of points earned for each Reading and Writing domain. State and district averages are provided for comparison.

Performance Distribution By % (All Students)	Number of Valid Scores	Participation Rate	Overall Mean Scale Score	Reading Mean Scale Score	Reading Literary	Reading Information	Reading Vocabulary	Writing* Overall	Written Expression	Language and Conventions
STATE 	57,362	92.9%	745	148	39%	34%	57%	19%	18%	20%
DISTRICT 	94	94.0%	754	151	43%	37%	57%	27%	27%	27%
CREST ACADEMY 	14	100.0%	746	150	46%	34%	54%	16%	16%	15%
SALIDA MIDDLE SCHOOL 	80	93.0%	756	151	42%	38%	58%	29%	29%	29%

Did Not Yet Meet Expectations (650-699)	Partially Met Expectations (700-724)	Approached Expectations (725-749)	Met Expectations (750-798)	Exceeded Expectations (799-850)
--	---	--	---	--

* Writing Overall is calculated by multiplying Written Expression points by three and adding Language and Conventions points.



District Summary of Schools

District: SALIDA R-32-J (0500)

English Language Arts/Literacy - Form A

CONFIDENTIAL - DO NOT DISTRIBUTE

Grade 5

	Reading				Vocabulary	Prose Constructed Response*	
	Key Ideas: Literary Text	Key Ideas: Informational Text	Craft & Structure	Integration of Knowledge & Ideas	Vocabulary Acquisition & Use	Prose Constructed Response 1	Prose Constructed Response 2
	Points Possible						
	22	22	16	10	8	19	12
	Average Percent of Points Earned						
State Average Form A:	45%	36%	44%	32%	57%	17%	22%
District Average Form A:	48%	38%	45%	37%	57%	23%	32%
CREST ACADEMY	50%	35%	44%	31%	54%	15%	17%
SALIDA MIDDLE SCHOOL	48%	39%	45%	38%	58%	24%	35%

*Prose Constructed Response points possible include writing and reading points for certain task types.
For more information about the Colorado Academic Standards go to <http://www.cde.state.co.us/coreadingwriting/statestandards>.



District Summary of Schools

District: **SALIDA R-32-J (0500)**

Mathematics - Form A

CONFIDENTIAL - DO NOT DISTRIBUTE

Grade 5

Purpose: This report shows the overall Mathematics mean scale score and participation rate for each school in the district. This page includes the average percent of points earned for each Mathematics subclaim and the following page includes the average percent of points earned for each Mathematics domain. State and district averages are provided for comparison.

Performance Distribution By % (All Students)	Number of Valid Scores	Participation Rate	Overall Mean Scale Score	Major Content	Supporting Content	Reasoning	Modeling
STATE 	57,423	92.7%	736	49%	43%	22%	25%
DISTRICT 	97	94.2%	749	61%	52%	28%	31%
CREST ACADEMY 	14	100.0%	748	55%	45%	29%	42%
SALIDA MIDDLE SCHOOL 	83	93.3%	750	62%	53%	27%	29%

Did Not Yet Meet Expectations (650-699)	Partially Met Expectations (700-724)	Approached Expectations (725-749)	Met Expectations (750-789)	Exceeded Expectations (790-850)
--	---	--	---	--



District Summary of Schools

District: SALIDA R-32-J (0500)

Mathematics - Form A

CONFIDENTIAL - DO NOT DISTRIBUTE

Grade 5

	Number & Operations in Base Ten	Number & Operations - Fractions	Measurement & Data	Reasoning & Modeling	
				On Grade Level	Securely Held Knowledge
Points Possible					
	9	10	7	10	10
Average Percent of Points Earned					
State Average Form A:	56%	43%	40%	23%	24%
District Average Form A:	68%	56%	49%	28%	30%
CREST ACADEMY	65%	51%	39%	34%	36%
SALIDA MIDDLE SCHOOL	68%	57%	51%	27%	29%



District Summary of Schools

Colorado Measures of Academic Success

Spring 2022

District: SALIDA R-32-J (0500)

English Language Arts/Literacy - Form A

CONFIDENTIAL - DO NOT DISTRIBUTE

Grade 6

Purpose: This report shows the overall English Language Arts and Reading mean scale scores and participation rate for each school in the district. This page includes the average percent of points earned for each Reading and Writing subclaim and the following page includes the average percent of points earned for each Reading and Writing domain. State and district averages are provided for comparison.

Performance Distribution By % (All Students)	Number of Valid Scores	Participation Rate	Overall Mean Scale Score	Reading Mean Scale Score	Reading Literary	Reading Information	Reading Vocabulary	Writing* Overall	Written Expression	Language and Conventions
STATE 	55,960	89.3%	742	147	45%	42%	57%	21%	20%	26%
DISTRICT 	76	100.0%	750	149	51%	44%	54%	27%	26%	32%
CREST ACADEMY 	12	100.0%	766	155	65%	50%	69%	33%	31%	42%
SALIDA MIDDLE SCHOOL 	64	100.0%	746	147	48%	43%	52%	26%	25%	31%

Did Not Yet Meet Expectations (650-699)	Partially Met Expectations (700-724)	Approached Expectations (725-749)	Met Expectations (750-789)	Exceeded Expectations (790-850)
--	---	--	---	--

* Writing Overall is calculated by multiplying Written Expression points by three and adding Language and Conventions points.



District Summary of Schools

Colorado Measures of Academic Success

Spring 2022

District: SALIDA R-32-J (0500)

English Language Arts/Literacy - Form A

CONFIDENTIAL - DO NOT DISTRIBUTE

Grade 6

	Reading				Vocabulary	Content Area Reading		Prose Constructed Response*	
	Key Ideas: Literary Text	Key Ideas: Informational Text	Craft & Structure	Integration of Knowledge & Ideas	Vocabulary Acquisition & Use	Literacy in History / Social Studies	Literacy in Science & Technical Subjects	Prose Constructed Response 1	Prose Constructed Response 2
	Points Possible								
	20	28	18	14	8	20	8	19	15
	Average Percent of Points Earned								
State Average Form A:	47%	45%	52%	38%	57%	42%	52%	22%	24%
District Average Form A:	53%	45%	52%	42%	54%	41%	54%	23%	35%
CREST ACADEMY	68%	53%	63%	51%	69%	48%	66%	29%	43%
SALIDA MIDDLE SCHOOL	50%	43%	50%	41%	52%	40%	52%	22%	33%

*Prose Constructed Response points possible include writing and reading points for certain task types.

For more information about the Colorado Academic Standards go to <http://www.cde.state.co.us/coreadingwriting/statestandards>.



District Summary of Schools

District: SALIDA R-32-J (0500)

Mathematics - Form A

CONFIDENTIAL - DO NOT DISTRIBUTE

Grade 6

Purpose: This report shows the overall Mathematics mean scale score and participation rate for each school in the district. This page includes the average percent of points earned for each Mathematics subclaim and the following page includes the average percent of points earned for each Mathematics domain. State and district averages are provided for comparison.

Performance Distribution By % (All Students)	Number of Valid Scores	Participation Rate	Overall Mean Scale Score	Major Content	Supporting Content	Reasoning	Modeling
STATE 	55,679	89.0%	728	33%	42%	30%	22%
DISTRICT 	75	100.0%	734	36%	43%	33%	29%
CREST ACADEMY 	11	100.0%	755	54%	57%	53%	39%
SALIDA MIDDLE SCHOOL 	64	100.0%	730	33%	41%	29%	27%

Did Not Yet Meet Expectations (650-699)	Partially Met Expectations (700-724)	Approached Expectations (725-749)	Met Expectations (750-787)	Exceeded Expectations (788-850)
--	---	--	---	--



District Summary of Schools

District: SALIDA R-32-J (0500)

Mathematics - Form A

CONFIDENTIAL - DO NOT DISTRIBUTE

Grade 6

	Ratios & Proportional Relationships	The Number System	Expressions & Equations	Reasoning & Modeling	
				On Grade Level	Securely Held Knowledge
Points Possible					
	9	7-8	7	10	10
Average Percent of Points Earned					
State Average Form A:	35%	37%	25%	28%	24%
District Average Form A:	39%	42%	25%	32%	30%
CREST ACADEMY	57%	53%	43%	47%	46%
SALIDA MIDDLE SCHOOL	36%	40%	22%	30%	27%



District Summary of Schools

Colorado Measures of Academic Success

Spring 2022

District: SALIDA R-32-J (0500)

English Language Arts/Literacy - Form A

CONFIDENTIAL - DO NOT DISTRIBUTE

Grade 7

Purpose: This report shows the overall English Language Arts and Reading mean scale scores and participation rate for each school in the district. This page includes the average percent of points earned for each Reading and Writing subclaim and the following page includes the average percent of points earned for each Reading and Writing domain. State and district averages are provided for comparison.

Performance Distribution By % (All Students)	Number of Valid Scores	Participation Rate	Overall Mean Scale Score	Reading Mean Scale Score	Reading Literary	Reading Information	Reading Vocabulary	Writing* Overall	Written Expression	Language and Conventions
STATE 	55,265	85.1%	741	146	37%	37%	51%	25%	24%	30%
DISTRICT 	96	98.0%	754	152	45%	44%	57%	28%	27%	35%
CREST ACADEMY 	15	100.0%	767	160	57%	54%	69%	29%	28%	33%
SALIDA MIDDLE SCHOOL 	81	97.6%	751	151	43%	42%	55%	28%	26%	35%

Did Not Yet Meet Expectations (650-699)	Partially Met Expectations (700-724)	Approached Expectations (725-749)	Met Expectations (750-784)	Exceeded Expectations (785-850)
--	---	--	---	--

* Writing Overall is calculated by multiplying Written Expression points by three and adding Language and Conventions points.



District Summary of Schools

District: SALIDA R-32-J (0500)

English Language Arts/Literacy - Form A

CONFIDENTIAL - DO NOT DISTRIBUTE

Grade 7

	Reading				Vocabulary	Content Area Reading		Prose Constructed Response*	
	Key Ideas: Literary Text	Key Ideas: Informational Text	Craft & Structure	Integration of Knowledge & Ideas	Vocabulary Acquisition & Use	Literacy in History / Social Studies	Literacy in Science & Technical Subjects	Prose Constructed Response 1	Prose Constructed Response 2
	Points Possible								
	24	26	20	12	10	12	14	15	19
	Average Percent of Points Earned								
State Average Form A:	39%	40%	42%	35%	51%	41%	39%	31%	22%
District Average Form A:	47%	47%	50%	41%	57%	51%	44%	34%	26%
CREST ACADEMY	58%	58%	62%	53%	69%	64%	53%	29%	31%
SALIDA MIDDLE SCHOOL	45%	45%	47%	39%	55%	48%	43%	35%	25%

*Prose Constructed Response points possible include writing and reading points for certain task types.

For more information about the Colorado Academic Standards go to <http://www.cde.state.co.us/coreadingwriting/statestandards>.



District Summary of Schools

District: SALIDA R-32-J (0500)

Mathematics - Form A

CONFIDENTIAL - DO NOT DISTRIBUTE

Grade 7

Purpose: This report shows the overall Mathematics mean scale score and participation rate for each school in the district. This page includes the average percent of points earned for each Mathematics subclaim and the following page includes the average percent of points earned for each Mathematics domain. State and district averages are provided for comparison.

Performance Distribution By % (All Students)	Number of Valid Scores	Participation Rate	Overall Mean Scale Score	Major Content	Supporting Content	Reasoning	Modeling
STATE 	55,283	84.9%	730	29%	35%	23%	23%
DISTRICT 	96	98.0%	742	36%	42%	27%	36%
CREST ACADEMY 	15	100.0%	755	46%	53%	44%	42%
SALIDA MIDDLE SCHOOL 	81	97.6%	739	34%	40%	24%	35%

Did Not Yet Meet Expectations (650-699)	Partially Met Expectations (700-724)	Approached Expectations (725-749)	Met Expectations (750-785)	Exceeded Expectations (786-850)
--	---	--	---	--



District Summary of Schools

District: SALIDA R-32-J (0500)

Mathematics - Form A

CONFIDENTIAL - DO NOT DISTRIBUTE

Grade 7

	Ratios & Proportional Relationships	The Number System	Expressions & Equations	Statistics & Probability	Reasoning & Modeling	
					On Grade Level	Securely Held Knowledge
	Points Possible					
	11	5	7	5	10	10
	Average Percent of Points Earned					
State Average Form A:	28%	46%	19%	44%	22%	24%
District Average Form A:	35%	52%	24%	52%	30%	33%
CREST ACADEMY	49%	60%	30%	68%	48%	39%
SALIDA MIDDLE SCHOOL	33%	51%	23%	49%	27%	32%



District Summary of Schools

Colorado Measures of Academic Success

Spring 2022

District: SALIDA R-32-J (0500)

English Language Arts/Literacy - Form A

CONFIDENTIAL - DO NOT DISTRIBUTE

Grade 8

Purpose: This report shows the overall English Language Arts and Reading mean scale scores and participation rate for each school in the district. This page includes the average percent of points earned for each Reading and Writing subclaim and the following page includes the average percent of points earned for each Reading and Writing domain. State and district averages are provided for comparison.

Performance Distribution By % (All Students)	Number of Valid Scores	Participation Rate	Overall Mean Scale Score	Reading Mean Scale Score	Reading Literary	Reading Information	Reading Vocabulary	Writing* Overall	Written Expression	Language and Conventions
STATE 	52,727	78.8%	742	147	46%	42%	44%	34%	32%	40%
DISTRICT 	98	90.7%	761	155	58%	49%	54%	44%	42%	53%
CREST ACADEMY 	5	100.0%	750	152	61%	44%	46%	34%	33%	40%
SALIDA MIDDLE SCHOOL 	93	90.3%	761	155	58%	49%	55%	44%	42%	54%

Did Not Yet Meet Expectations (650-699)	Partially Met Expectations (700-724)	Approached Expectations (725-749)	Met Expectations (750-793)	Exceeded Expectations (794-850)
--	---	--	---	--

* Writing Overall is calculated by multiplying Written Expression points by three and adding Language and Conventions points.



District Summary of Schools

Colorado Measures of Academic Success

Spring 2022

District: SALIDA R-32-J (0500)

English Language Arts/Literacy - Form A

CONFIDENTIAL - DO NOT DISTRIBUTE

Grade 8

	Reading				Vocabulary	Content Area Reading		Prose Constructed Response*	
	Key Ideas: Literary Text	Key Ideas: Informational Text	Craft & Structure	Integration of Knowledge & Ideas	Vocabulary Acquisition & Use	Literacy in History / Social Studies	Literacy in Science & Technical Subjects	Prose Constructed Response 1	Prose Constructed Response 2
	Points Possible								
	24	26	26	12	10	8	18	19	15
	Average Percent of Points Earned								
State Average Form A:	47%	41%	40%	41%	44%	44%	40%	34%	37%
District Average Form A:	58%	49%	49%	48%	54%	53%	47%	45%	48%
CREST ACADEMY	62%	40%	45%	47%	46%	40%	40%	34%	37%
SALIDA MIDDLE SCHOOL	58%	49%	50%	48%	55%	53%	47%	45%	49%

*Prose Constructed Response points possible include writing and reading points for certain task types.

For more information about the Colorado Academic Standards go to <http://www.cde.state.co.us/coreadingwriting/statestandards>.



District Summary of Schools

District: SALIDA R-32-J (0500)

Mathematics - Form A

CONFIDENTIAL - DO NOT DISTRIBUTE

Grade 8

Purpose: This report shows the overall Mathematics mean scale score and participation rate for each school in the district. This page includes the average percent of points earned for each Mathematics subclaim and the following page includes the average percent of points earned for each Mathematics domain. State and district averages are provided for comparison.

Performance Distribution By % (All Students)	Number of Valid Scores	Participation Rate	Overall Mean Scale Score	Major Content	Supporting Content	Reasoning	Modeling
STATE 	52,554	78.7%	731	37%	40%	17%	20%
DISTRICT 	99	91.7%	742	40%	44%	21%	28%
CREST ACADEMY 	5	100.0%	734	33%	40%	18%	16%
SALIDA MIDDLE SCHOOL 	94	91.3%	743	41%	44%	21%	28%

Did Not Yet Meet Expectations (650-699)	Partially Met Expectations (700-724)	Approached Expectations (725-749)	Met Expectations (750-800)	Exceeded Expectations (801-850)
--	---	--	---	--



District Summary of Schools

District: SALIDA R-32-J (0500)

Mathematics - Form A

CONFIDENTIAL - DO NOT DISTRIBUTE

Grade 8

	Geometry	Expressions & Equations	Functions	Reasoning & Modeling	
				On Grade Level	Securely Held Knowledge
	Points Possible				
	10	11	7	10	10
	Average Percent of Points Earned				
State Average Form A:	37%	33%	41%	22%	14%
District Average Form A:	43%	35%	41%	31%	17%
CREST ACADEMY	26%	35%	34%	26%	8%
SALIDA MIDDLE SCHOOL	44%	35%	41%	31%	17%