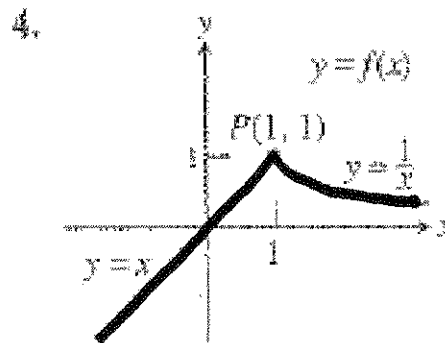
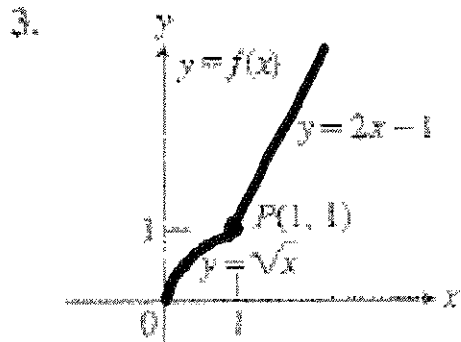
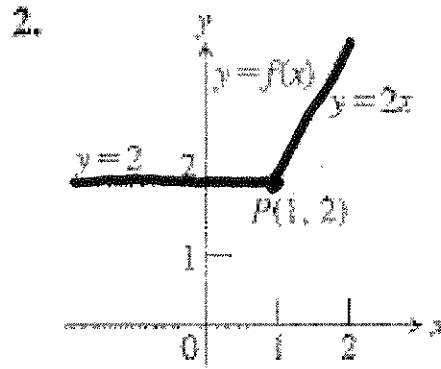
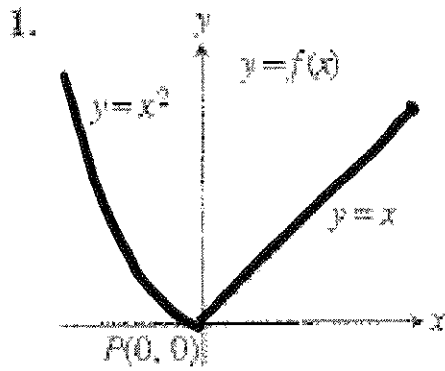
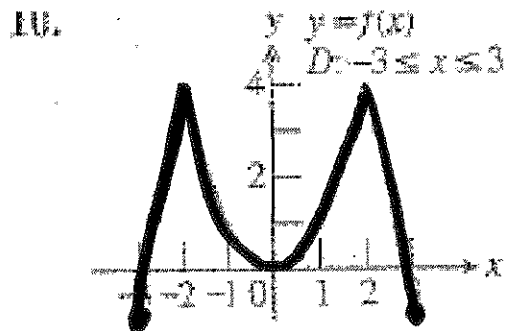
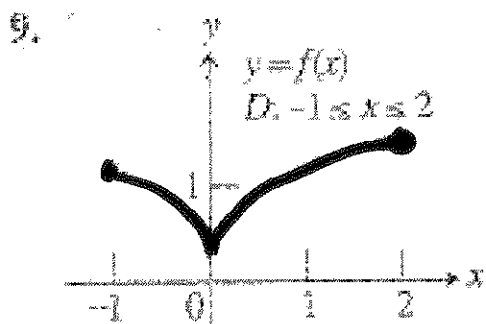
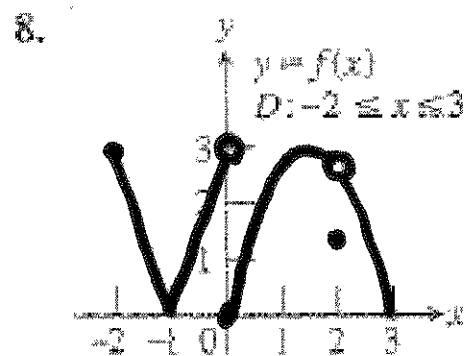
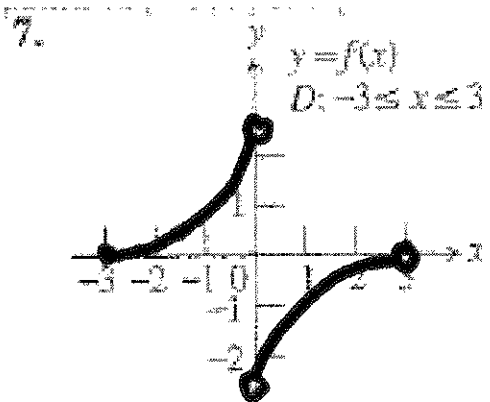
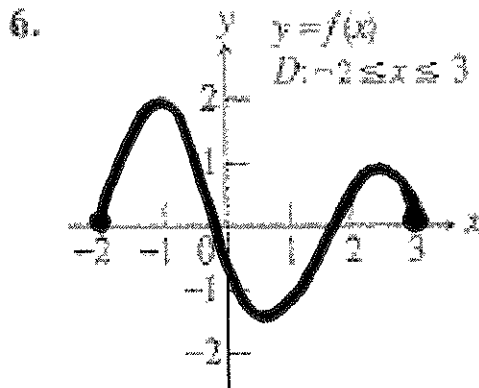
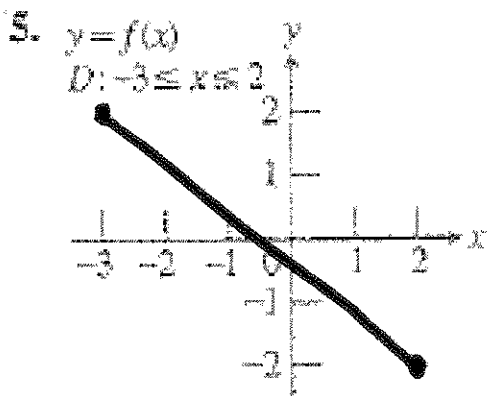


Find the point where the function is not differentiable. Then tell why it is not differentiable at that point.



- a. Find all points where the function, $f(x)$, is differentiable.
- b. Find all points where the function is continuous, but not differentiable.
- c. Find all points where the graph is neither continuous nor differentiable.



3.2 Differentiability:

- Find all points where the function, $f(x)$, is differentiable.
- Find all points where the function is continuous, but not differentiable.
- Find all points where the graph is neither continuous nor differentiable.

