

Graphing Radicals Practice Test #2

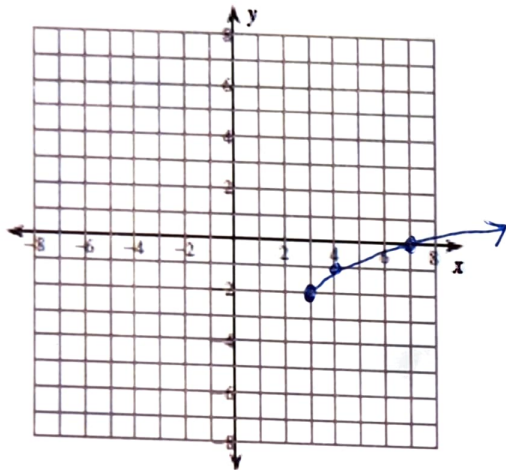
- Sketch the graph of the equation
- Describe the transformation from the base/parent radical function
- Give the domain and range

1. $y = \sqrt{x-3} - 2$

Right 3 and Down 2

Domain $[3, \infty)$

Range $[-2, \infty)$

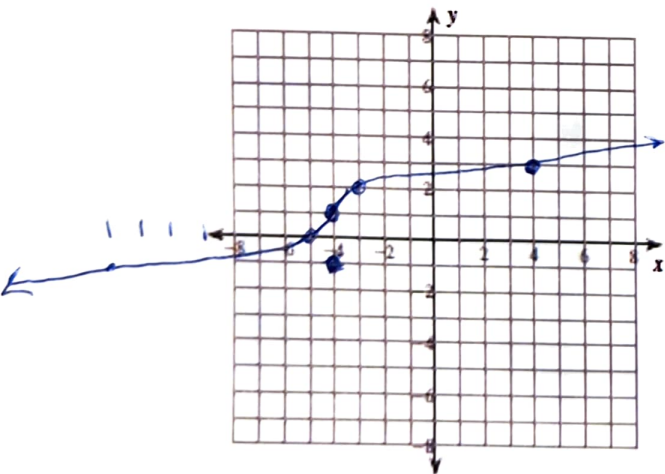


x	y
3	-2
4	-1
7	0

2. $y = \sqrt[3]{x+4} + 1$

Left 4 up 1

Domain and Range $(-\infty, \infty)$



x	y
-4	1
4	3
-3	2
-5	0
-12	-1